

Lancaster County-Wide Communications



**Year End Report
2006**

LANCASTER COUNTY COMMUNICATIONS REPORT FOR 2006

The following report is developed to show the activity of Lancaster County Communications, along with the emergency services that we dispatch. Totals are derived from the computer aided dispatch system, along with other tabular data kept at Communications. Call totals may not be as exact as your individual department records. However, records should be close enough to use if needed for your own cause. Please feel free to utilize this report when necessary.

Total incidents for 2006 (police, fire, ems)	409,837	9,739 increase
Total 9-1-1 calls handled in 2006	217,518	7,000 increase
Total Law Enforcement calls for 2006	303,230	3,502 increase
Total EMS calls for 2006	81,886	4,704 increase
Total Fire calls for 2006	24,721	1,533 increase

Daily averages:

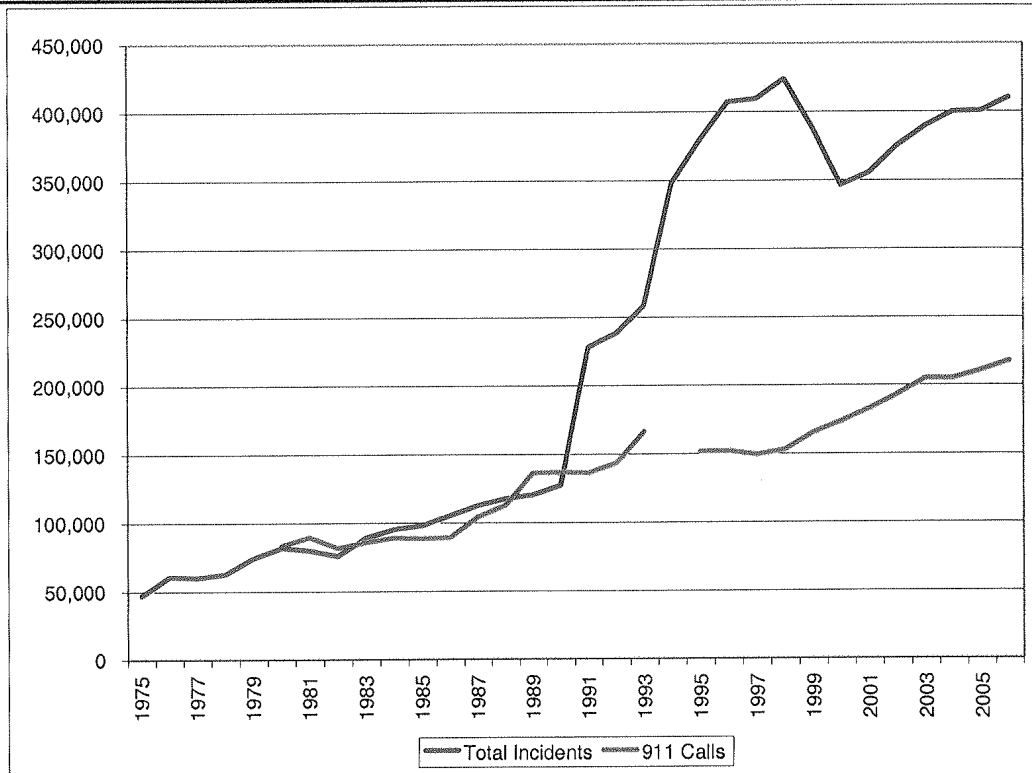
9-1-1 calls	595
Law Enforcement	831
EMS	224
Fire	68

CLEAN/NCIC traffic handled, messages received and sent - 1,771,072

Continue to access our website at www.lcwc.co.lancaster.pa.us to see updated information on the radio system and other communications related issues.. In addition, if you have any questions about Communications, please feel free to submit them on the form provided on our site.

Annual Comparisons

Year	Fire	EMS	Police	Total Incidents	911 Calls	Fire % Change	EMS % Change	Police % Change	911 % Change
1975	2,665	4,130	39,362	46,157					
1976	3,482	6,914	49,783	60,179		30.7%	67.4%	26.5%	
1977	3,722	7,689	47,892	59,303		6.9%	11.2%	-3.8%	
1978	3,607	8,891	49,499	61,997		-3.1%	15.6%	3.4%	
1979	3,878	14,942	54,709	73,529		7.5%	68.1%	10.5%	
1980	6,582	19,012	55,510	81,104	83,086	69.7%	27.2%	1.5%	
1981	7,323	19,442	52,433	79,198	89,198	11.3%	2.3%	-5.5%	7.4%
1982	7,194	19,868	47,928	74,990	81,345	-1.8%	2.2%	-8.6%	-8.8%
1983	8,451	23,730	56,349	88,530	85,482	17.5%	19.4%	17.6%	5.1%
1984	9,004	26,088	59,589	94,681	88,672	6.5%	9.9%	5.7%	3.7%
1985	10,295	27,052	60,078	97,425	88,065	14.3%	3.7%	0.8%	-0.7%
1986	11,515	29,510	63,635	104,660	88,833	11.9%	9.1%	5.9%	0.9%
1987	11,786	31,049	69,095	111,930	103,851	2.4%	5.2%	8.6%	16.9%
1988	12,403	32,381	72,301	117,085	112,358	5.2%	4.3%	4.6%	8.2%
1989	12,823	33,006	73,840	119,669	135,847	3.4%	1.9%	2.1%	20.9%
1990	12,501	33,850	80,046	126,397	136,392	-2.5%	2.6%	8.4%	0.4%
1991	15,013	38,821	173,658	227,492	135,890	20.1%	14.7%	116.9%	-0.4%
1992	16,630	46,084	174,830	237,544	142,989	10.8%	18.7%	0.7%	5.2%
1993	19,641	50,064	188,083	257,788	165,842	18.1%	8.6%	7.6%	16.0%
1994	22,055	56,209	269,267	347,531		12.3%	12.3%	43.2%	
1995	21,053	56,893	300,949	378,895	151,444	-4.5%	1.2%	11.8%	-8.7%
1996	21,303	61,591	324,047	406,941	151,512	1.2%	8.3%	7.7%	0.0%
1997	20,758	60,946	327,460	409,164	148,917	-2.6%	-1.0%	1.1%	-1.7%
1998	21,758	62,715	339,241	423,714	152,593	4.8%	2.9%	3.6%	2.5%
1999	21,837	60,597	305,062	387,496	164,995	0.4%	-3.4%	-10.1%	8.1%
2000	20,422	53,608	271,892	345,922	173,150	-6.5%	-11.5%	-10.9%	4.9%
2001	21,595	54,772	278,753	355,120	182,376	5.7%	2.2%	2.5%	5.3%
2002	22,333	66,230	286,175	374,738	192,877	3.4%	20.9%	2.7%	5.8%
2003	24,211	71,880	293,150	389,241	204,603	8.4%	8.5%	2.4%	6.1%
2004	24,144	74,426	301,078	399,648	204,604	-0.3%	3.5%	2.7%	0.0%
2005	23,188	77,182	299,728	400,098	210,518	-4.0%	3.7%	-0.4%	2.9%
2006	24,721	81,886	303,230	409,837	217,333	6.6%	6.1%	1.2%	3.2%



Notes:

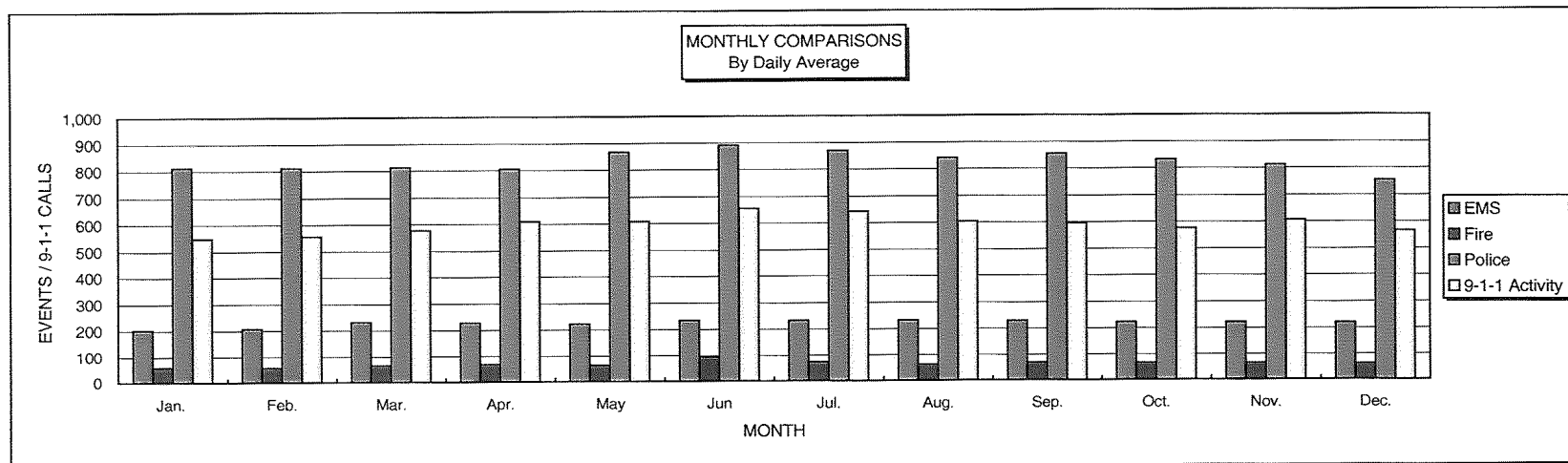
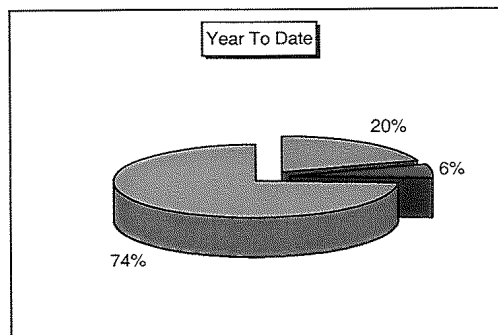
- 1980 Started dispatching Lancaster City Fire
- 1991 Unysis CAD put on-line
- 1994 Started dispatching Lancaster City Police
- 1999 Genisis CAD put on-line



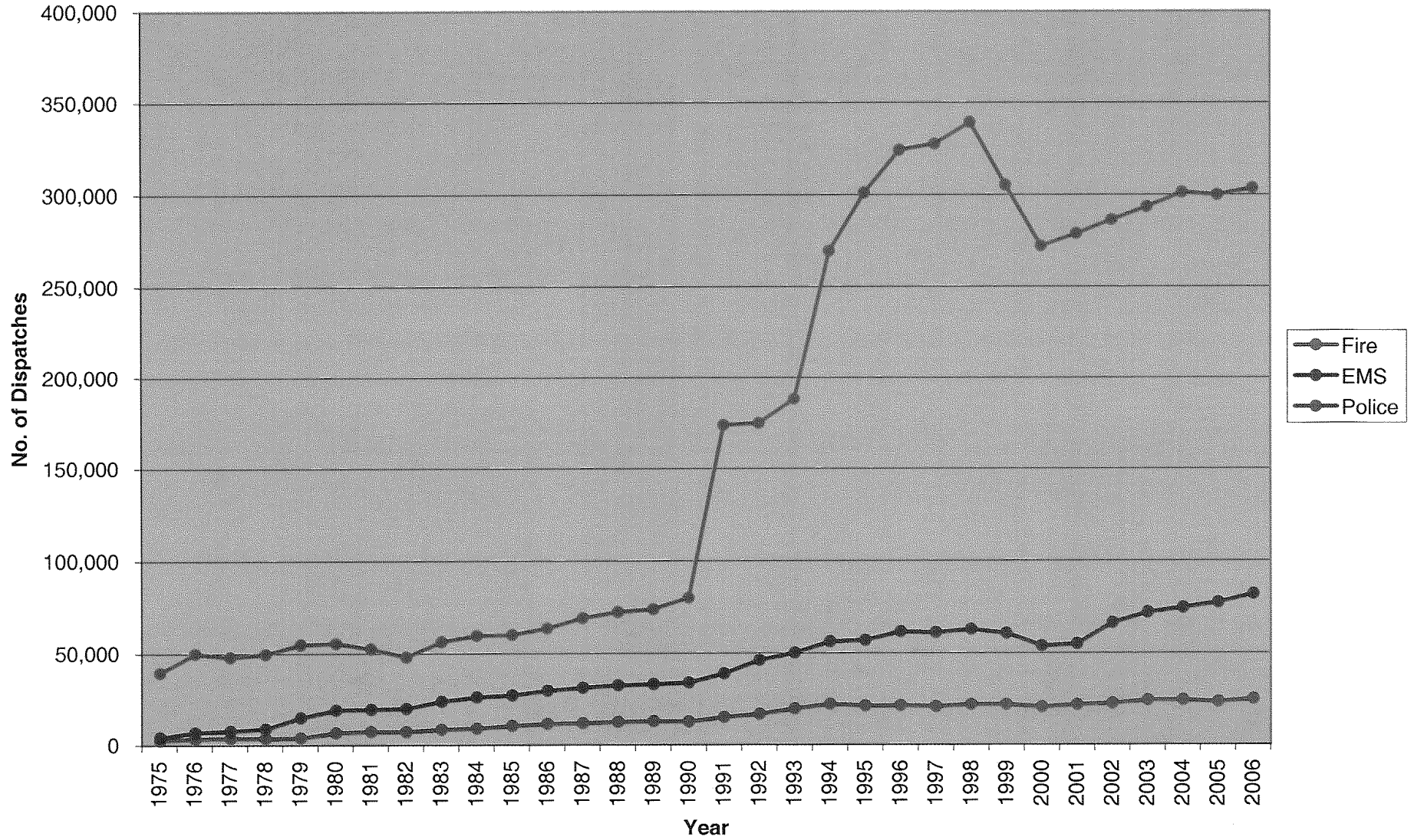
LANCASTER COUNTY-WIDE COMMUNICATIONS

2006 Communications Report

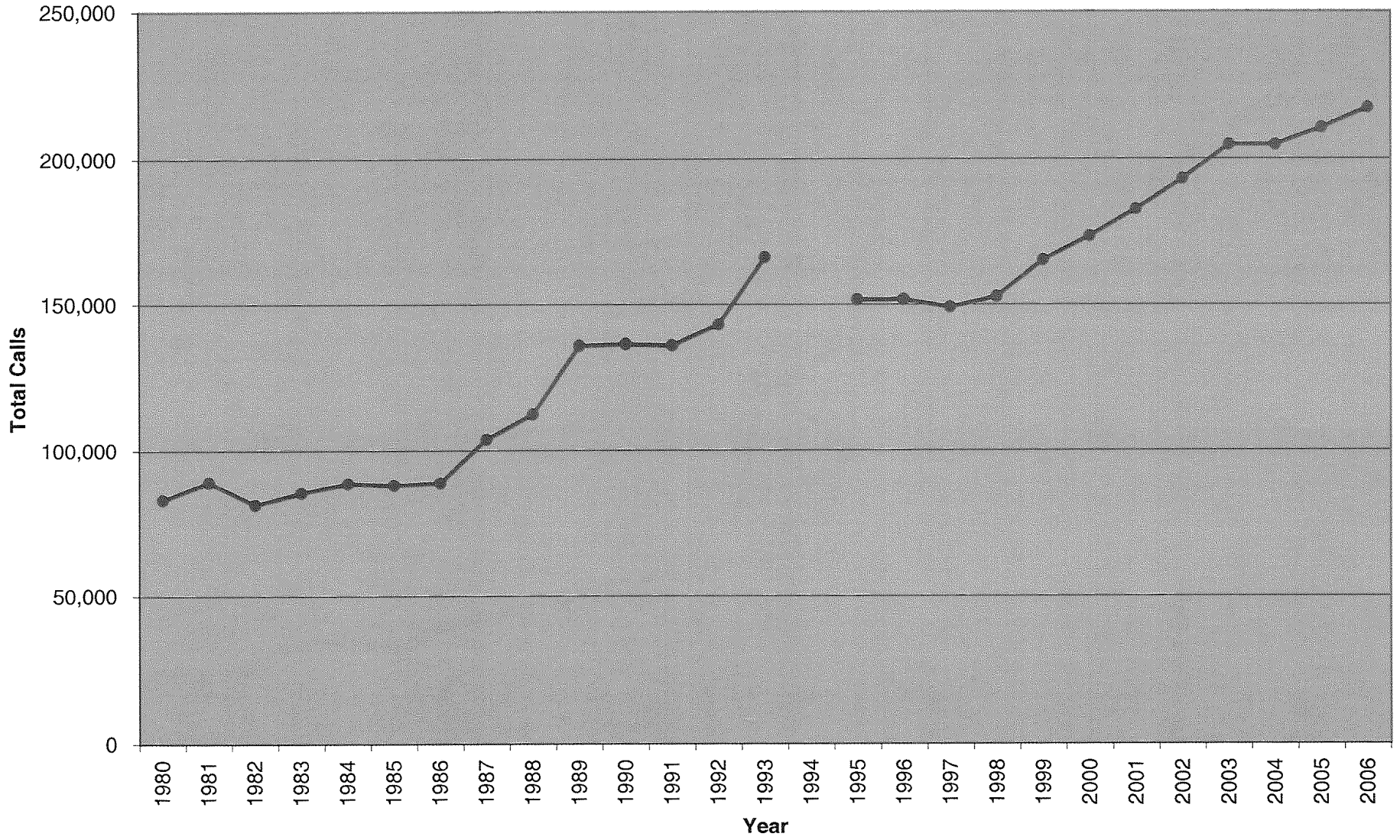
	Jan.	Feb.	Mar.	Apr.	May	Jun	Jul.	Aug.	Sep.	Oct.	Nov.	Dec.	TOTAL
EMS Dispatches	6,297	5,793	7,198	6,876	6,907	7,038	7,241	7,220	6,907	6,909	6,658	6,842	81,886
Fire Dispatches	1,829	1,616	2,037	2,070	1,994	2,863	2,301	1,970	2,065	2,072	1,976	1,928	24,721
Police Dispatches	25,182	22,717	25,212	24,142	26,895	26,764	27,001	26,104	25,660	25,819	24,338	23,396	303,230
Total Dispatches	33,308	30,126	34,447	33,088	35,796	36,665	36,543	35,294	34,632	34,800	32,972	32,166	409,837
EMS % of Total	18.91%	19.23%	20.90%	20.78%	19.30%	19.20%	19.82%	20.46%	19.94%	19.85%	20.19%	21.27%	19.98%
Fire % of Total	5.49%	5.36%	5.91%	6.26%	5.57%	7.81%	6.30%	5.58%	5.96%	5.95%	5.99%	5.99%	6.03%
Police % of Total	75.60%	75.41%	73.19%	72.96%	75.13%	73.00%	73.89%	73.96%	74.09%	74.19%	73.81%	72.74%	73.99%
Avg. Daily EMS	203	207	232	229	223	235	234	233	230	223	222	221	224
Avg. Daily Fire	59	58	66	69	64	95	74	64	69	67	66	62	68
Avg. Daily Police	812	811	813	805	868	892	871	842	855	833	811	755	831
Avg. Daily Total	1,074	1,076	1,111	1,103	1,155	1,222	1,179	1,139	1,154	1,123	1,099	1,038	1,123
9-1-1 Calls Rec'd	16,984	15,593	17,867	18,285	18,831	19,675	19,908	18,708	17,894	17,867	18,152	17,569	217,333
Avg. Daily 9-1-1	548	557	576	610	607	656	642	603	596	576	605	567	595



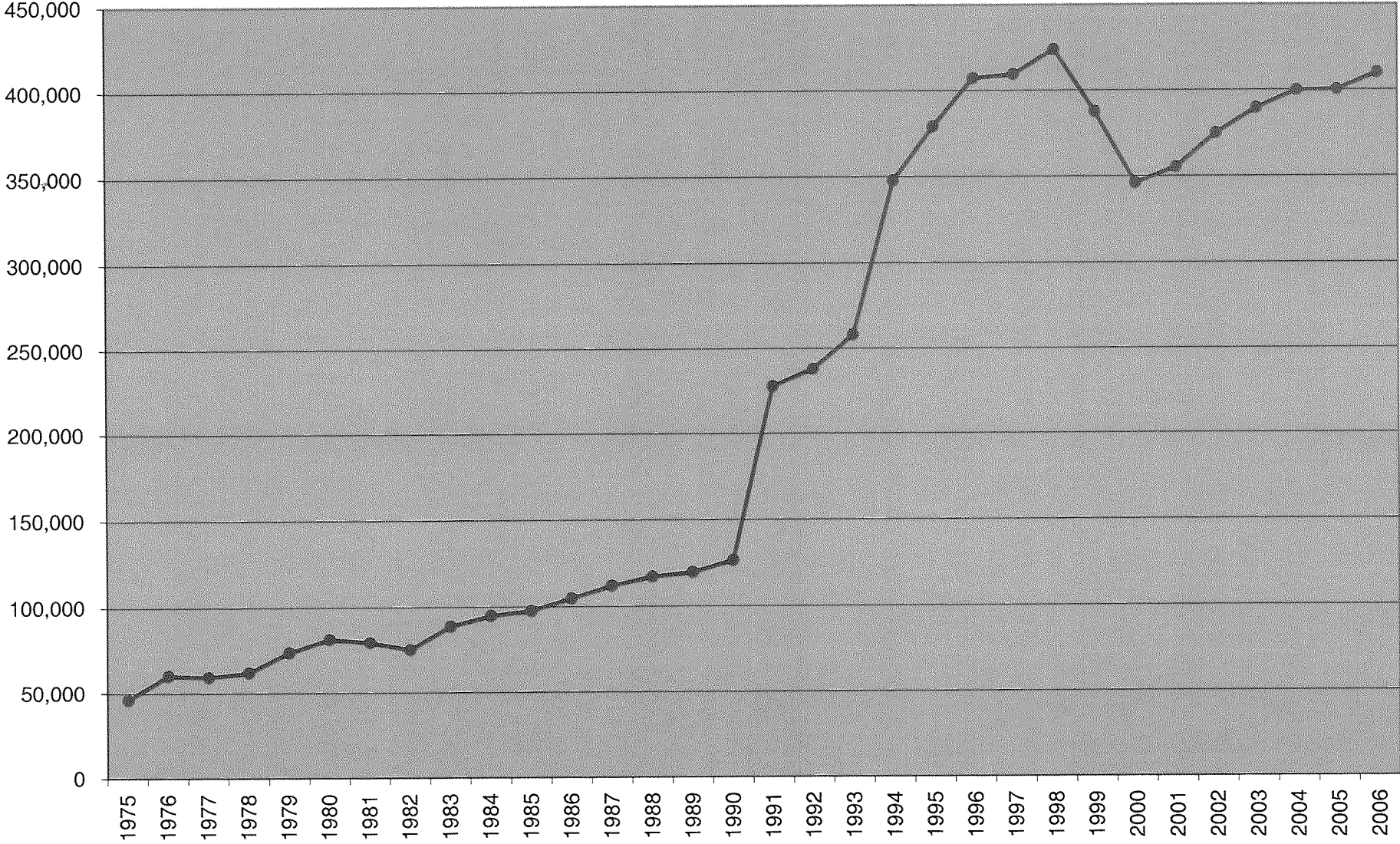
Dispatches by Type



Total 9-1-1 Calls Received



Total Dispatches by Year



2006 Year End Report

Public Education and Tours

Lancaster County Communications participates in many public education events throughout the year. A dedicated group of Telecommunicators attend these functions and provide valuable information to attendees in the use of the 9-1-1 system. If you are interested in having us speak to your group or agency, please give us a call at 664-1100 to make arrangements.

Communications provides 9-1-1 simulator training, adult and child education and provides informative handouts for all ages. Below is a listing of agencies and groups that we provided education to in the year 2006;

- Lampeter Strasburg High School Law Class
- Neff Elementary School
- Penn Manor High School
- Willow Street Career and Technical School
- Eshelman Elementary
- Kelloggs
- New Holland Farmers Fair
- Manheim Township Middle School
- Limeville Christian Pre-School
- Lancaster Fest

In addition to providing public education, Communications hosts tours of our center. The following groups or agencies toured our center this past year;

Mount Calvary 6 th grade	Mount Joy Cub Scouts
Smokestown Fire Company	Lititz Home School Program
CVHS emergency services class	White Horse Fire Company
Oak Lane Mennonite School	McCaskey High School law class
Atglen Fire Company	Terre Hill Cub Scouts
Lancaster Safety Coalition	Lanc County contingent planners
Penryn Fire Company	

2006 Year End Report

Communications Center Statistics

Busiest Day for dispatches: Friday

Busiest hour for dispatches: 16:00-17:00

Top 10 incident types:

Traffic Stop	36,728
Follow Up	27,916
Information	15,189
Police Activity	10,482
Alarm In-Progress	8,791
Vehicle Accident/no injury	7,753
Routine Transfer EMS	7,631
Disturbance in Progress	7,123
Vandalism/NIP	6,331
Aid Assist in Progress	6,286

Busiest Law Enforcement Agencies:

Lancaster City	87,830
Manheim Township	31,313
East Lampeter Township	19,402
Ephrata PD	16,275
East Hempfield Township	14,200

Busiest EMS Agencies:

LEMSA	17,837
SVEMS	12,530
Northwest	4,331
Manheim Township	4,166
Ephrata Hospital ALS	3,922

Busiest Fire Agencies:

Lancaster City	3,290	Neffsville	607
Southern Manheim Township	778	Lancaster Twp	592
Rohrerstown	741	Manheim	541
Mount Joy	649		
Eden	632		
Elizabethtown	618		
West Hempfield	609		

2006 Year End Report

Dispatch Statistics by Municipality

Municipality	Police incidents	EMS incidents	Fire incidents
Adamstown Borough	609	82	50
Akron Borough	2,241	165	53
Bart Township	N/A	120	109
Brecknock Township	N/A	291	192
Caernarvon Township	N/A	305	123
Christiana Borough	688	163	51
Clay Township	1,494	290	184
Colerain Township	N/A	108	63
Columbia Borough	12,195	1,916	411
Conestoga Township	2,319	192	130
Conoy Township	1,018	127	81
Denver Borough	2,115	240	85
Drumore Township	N/A	121	66
Earl Township	2,204	502	187
East Cocalico Township	6,477	833	275
East Donegal Township	3,958	525	378
East Drumore Township	N/A	341	135
East Earl Township	3,743	319	182
East Hempfield Township	14,360	3,801	952
East Lampeter Township	15,011	1,512	612
East Petersburg Borough	2,769	207	102
Eden Township	N/A	62	54
Elizabeth Township	N/A	139	97
Elizabethtown Borough	6,656	1,802	233
Ephrata Borough	12,143	1,287	302
Ephrata Township	4,179	738	205
Fulton Township	N/A	173	100
Lancaster City	79,560	9,469	3,240
Lancaster Township	8,701	1,780	414
Leacock Township	N/A	305	123
Lititz Borough	5,967	1,182	227
Little Britain Township	N/A	119	70
Manheim Borough	4,631	412	133
Manheim Township	27,620	3,738	1,304
Manor Township	7,772	994	474
Marietta Borough	1,548	191	80
Martic Township	N/A	195	181
Millersville Borough	5,354	1,617	202
Mount Joy Borough	3,864	825	183

Municipality	Police	EMS	Fire
Mount Joy Township	5,014	598	285
Mountville Borough	1,177	165	73
New Holland Borough	3,867	491	153
Paradise Township	N/A	271	185
Penn Township	4,183	719	280
Pequea Township	1,906	221	129
Providence Township	N/A	404	206
Quarryville Borough	1,867	247	69
Rapho Township	N/A	555	387
Sadsbury Township	N/A	154	109
Salisbury Township	N/A	536	281
Strasburg Borough	1,691	286	45
Strasburg Township	N/A	200	112
Terre Hill Borough	322	48	24
Upper Leacock Township	4,199	556	208
Warwick Township	6,595	880	368
West Cocalico Township	1,578	224	181
West Donegal Township	2,078	1,070	162
West Earl Township	4,072	457	227
West Hempfield Township	10,162	981	493
West Lampeter Township	6,125	2,321	330

N/A= Handled by PSP